



Successor Solar Incentive (SuSI) Program

Competitive Solar incentive (CSI) Program

March 6, 2024

New Jersey's
Clean Energy Program™

Lighting the way to New Jersey's Clean Energy Future

Housekeeping Slide

- All attendees will be automatically muted. Please note that the “Chat” function is not available for this meeting.
- Questions? Please use the “Q&A” function in Zoom
- We will address clarifying questions at the end
- This meeting is being recorded.

Disclaimer

This presentation is provided for informational purposes only and should not be taken to represent the views of the New Jersey Board of Public Utilities, its Commissioners, or the State of New Jersey. Please be aware that any information presented is subject to change if there are changes to New Jersey statutes, rules, or policies.

All viewers are responsible for ensuring that they rely only on current legal authority regarding the matters covered in the presentation.

Agenda

- Introduction
- Solar Successor Incentive Program
- CSI Solicitation Schedule
- CSI Tranches and MW Caps
- CSI Program Eligibility
- CSI Registration Requirements and Process
- CSI Extension Policy
- Q&A
- Additional Resources

Solar Successor Incentive Program (SuSI)

- The SuSI Program consists of two sub-programs:
 1. **Administratively Determined Incentive (ADI) Program**
 - Administratively set incentives for residential and non-residential solar facilities and community solar facilities, 5MW or smaller in size,
 2. **Competitive Solar Incentive (CSI) Program**
 - Competitively determined incentives, established through a solicitation process. Open to qualified grid supply facilities, non -residential net metered facilities greater than 5MW in size, and grid facilities in combination with energy storage.

CSI Program Solicitation Schedule

Event	Date
Prequalification window opened	November 27, 2023
Deadline for final bid submission	February 29, 2024, 11:59:59 pm EST <u>CLOSED</u>
Winning bids announced by Board Order	Target: April 2024
Registration of Awarded Projects Due	30 days after issuance of award

Winning bids will be announced by Board Order after the solicitation closes. Bid information that will be made public includes the name of the bidding party, the price of the winning bid, the project capacity in MW (dc), and if applicable, the acreage of covered farmland on which the project will be sited.

Energy Year 2024 CSI Tranches and MW Caps

The total procurement target for this solicitation is 300MW; the megawatt procurement targets per tranche are listed in the below table.

Energy Year 2024 CSI Capacity Blocks by Market Segment or Tranche

Market Segment (Tranche)	Target (MW)
1. Basic Grid Supply	140
2. Grid Supply on the Built Environment	80
3. Grid Supply on Contaminated Sites & Landfills	40
4. Net Metered Non-Residential above 5 MW	40
TOTAL	300
5. *Storage Paired with Grid Supply Solar	160 MWh

* The fifth tranche will award storage in combination with a grid supply solar award from tranche 1, 2 or 3.



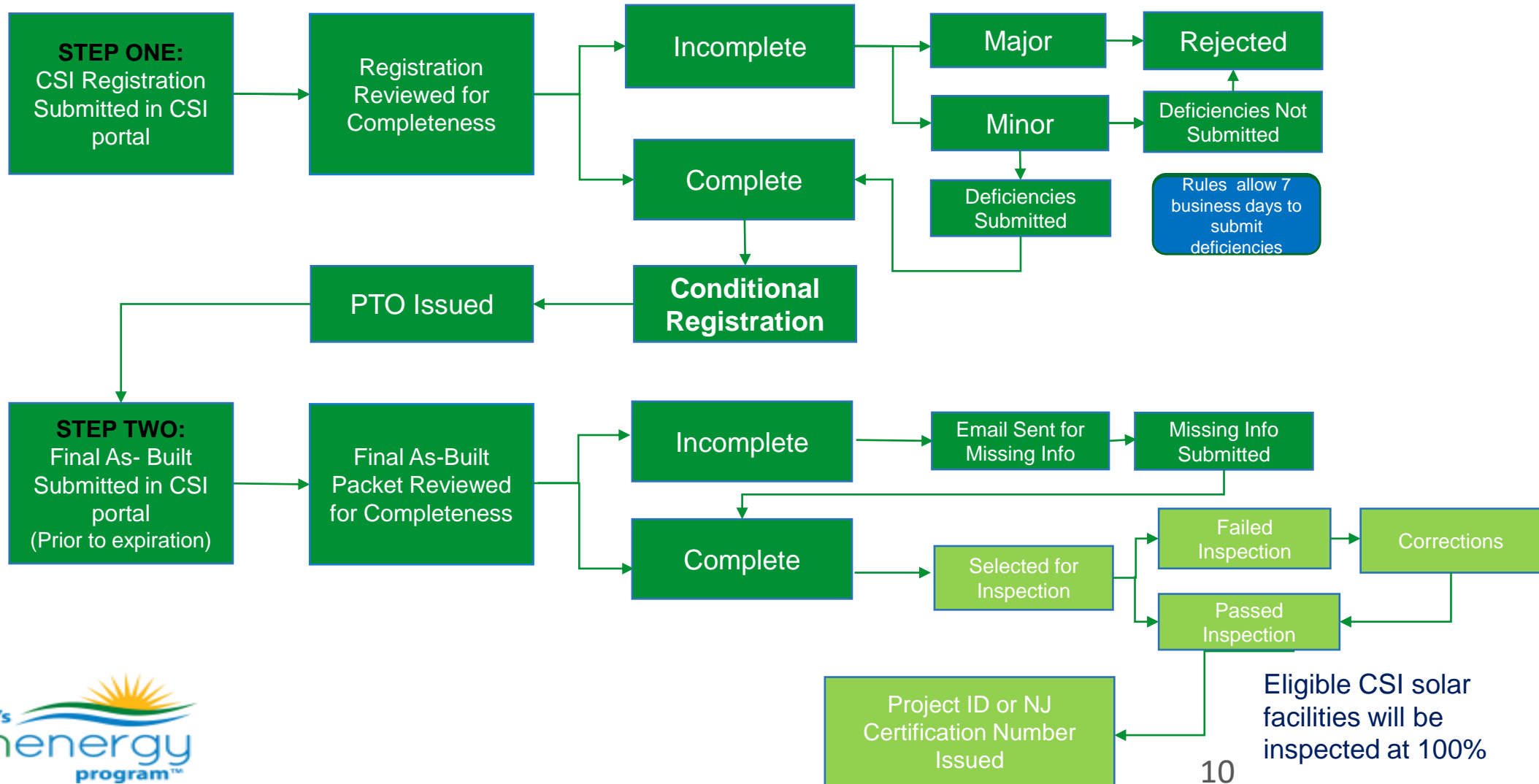
CSI Program Eligibility Requirements

- The CSI Program is open to new facilities that have not commenced commercial operation, and facilities previously registered in the TI or ADI Program that failed to commence commercial operations and/or submit post-construction certification by the project expiration date.
- Solar facilities that have commenced commercial operation prior to the opening of the CSI Program, December 7, 2022, are **not eligible** to participate in the CSI Program unless the Board grants a waiver in response to a petition.
- The solar equipment must be new. **N.J.A.C. 14:8-11.4 (c)** *The equipment used in an CSI-eligible facility must be new; that is, none of the equipment may have been used prior to the installation. (racking, meter, inverter, modules)*
- Solar facilities conditionally approved via Board Order shall not be permitted to increase the capacity referenced in the Board Order by more than **20 percent or 25 kW (dc)**, whichever is smaller.
- Solar facilities must be connected to a distribution or transmission system owned or operated by a New Jersey public utility or local government unit.
- Solar facilities receiving incentives that are 1 MW (dc) or greater in size are subject to the Prevailing Wage Act **N.J.S.A. 34:11-56.25, et seq.**

CSI Program Registration Requirements

- Awarded projects must register in the CSI Program Registration online portal on New Jersey's Clean Energy Website within **30 Days** of award.
 - Awarded projects will then receive a **notice of conditional registration** pursuant to **N.J.A.C. 14:8-11.5(g)** prior to beginning construction, unless otherwise granted special dispensation by the Board.
- All CSI-eligible facilities must comply with the Siting Rules for Grid Supply and Large Net-Metered Solar Facilities pursuant to **N.J.A.C. 14:8-12**
- Grid supply project developers are encouraged to work with PJM and the relevant Electric Distribution Company (EDC) to determine feasibility, impact and other requirements prior to executing a contract for construction and submitting a CSI Registration packet.
- Registrants with complete packets (i.e. all documents submitted, all deficiencies cured, meet the eligibility requirements for the tranche) will be issued a **notice of conditional registration** with a **36- month** commitment length based on the date the conditional acceptance is issued.

CSI Program Registration-Two Step Process



CSI Initial Registration Packet

CSI Initial Registration Checklist

<p>Site Plan certified by a licensed professional engineer that includes all features that may affect performance and construction of the solar facility</p>	<p>A completed CSI Registration Certification Form with all the appropriate signatures</p>
<p>For Grid Solar Facilities, documentation of the determination by PJM or the EDC confirming that the point of interconnection is located on the EDC's distribution system serving NJ.</p>	<p>For net metered solar facilities, written authorization from the EDC providing conditional approval to construct.</p>
<p>For net metered solar facilities, a Utility Bill showing the site host's name, address, account number and electric tariff.</p>	<p>A copy of the Board Order as evidence of the project's accepted bid into the CSI Program</p>
<p>A Milestone Reporting Form is required to be submitted with the initial CSI Registration packet and quarterly thereafter until the Post Construction Certification Packet (Final As-Built) is submitted.</p>	<p>For Solar Facilities on Contaminated Site or Landfill, a completed Contaminated Site and Landfill Eligibility Verification form.</p>
<p>A contract between the primary installer or third-party owner, as applicable, and the bidder or customer of record must be submitted within one year of the date of conditional registration.</p>	<p>For Solar Facilities on Contaminated Site or Landfills, a NJDEP Permit Readiness Checklist showing evidence of applications for all discretionary land use approvals and entitlements applicable to the solar project. This standard form can be found on the NJ Clean Energy website.</p>
<p>A Completed and Signed CSI Technical Worksheet with all appropriate signatures</p>	

CSI Initial Registration Packet

- **CSI Initial Registration Checklist and forms** can be found on the NJ Clean Energy website under [CSI Program](#) or on the homepage of the [CSI portal page](#). A checklist is included in the portal to use to manage your uploads.
- CSI Registration packets must be submitted in the **CSI Online Portal** at <https://njcsi.customerapplication.com/>
- All information entered in the CSI registration portal **must be consistent** with the information on the documents that are uploaded.
- Documents submitted with electronic signatures must include a **Signature Verification Sheet**
- CSI Registration packets deemed incomplete due to a **Minor** deficiency will have 7 business days to cure.
- CSI Registration packets deemed incomplete due to a **Major** deficiency will be rejected.
 - **Identifying Minor and Major Deficiencies** document can be found at NJ Clean Energy CSI Program and on the Homepage of the CSI portal

Contaminated Sites and Landfills (Tranche 3) Additional Registration Documents

For solar facilities located on contaminated sites or landfills a Verification Form and NJDEP Permit Readiness Checklist must be submitted with the CSI registration package to deem the CSI registration complete.

- These documents must be supplied to NJDEP for a review of site

Tranche 3 registrations that are deemed complete will received a pending acceptance letter which will not include a conditional acceptance date or expiration date.

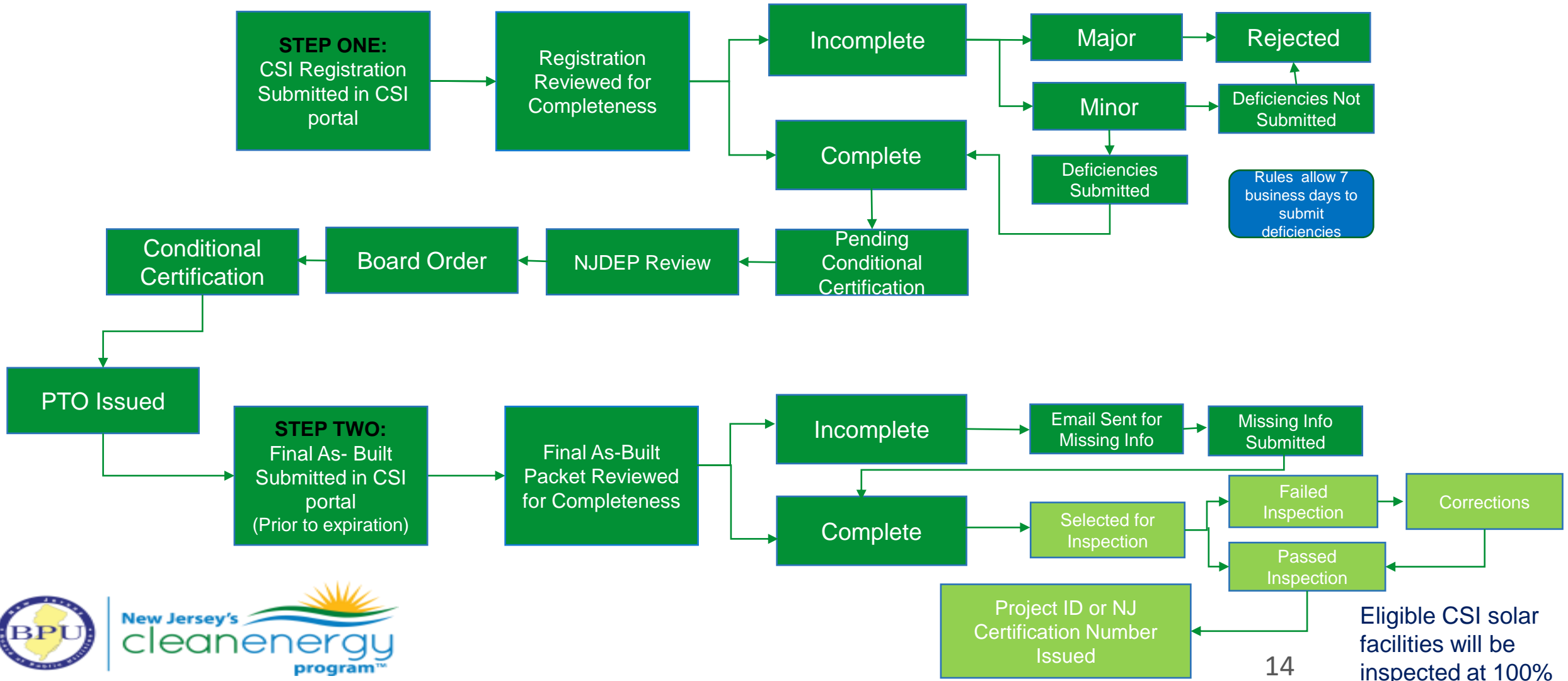
After NJDEP review, a Board Order will be issued granting conditional certification for the solar facility.

The Board Order granting conditional certification must be uploaded to the CSI online portal, at which time a CSI conditional acceptance letter will be issued which will include an acceptance date and expiration date.

The conditional acceptance date (36-months) will be based on the date the CSI conditional acceptance letter is issued and the project status changes to Accepted.

For projects to be located on contaminated sites or landfills only, conditional certification of Tranche 3 eligibility from the Board, which the developer shall apply for using the form located on the Board's New Jersey Clean Energy Program website at www.njcleanenergy.com. The "Eligibility Verification Form" is the means to apply in accordance with this rule.

Tranche 3-Registration Process



CSI Post Construction (Final As-Built) Certification Checklist

Post-Construction Certification Checklist	
A <u>completed and signed CSI Final As-Built Technical Worksheet</u> with appropriate signatures.	Solar Equipment Information - <u>Any system changes</u> from the initial registration must be reflected in the CSI online portal.
<u>Electrical and Building Permits</u> as submitted and approved by the relevant municipality.	If there are changes to the original proposed system specifications that were included in the initial CSI registration packet, a one-page <u>Site Plan pursuant to N.J.A.C 14:8-11.2</u> signed and sealed by a licensed professional engineer.
<u>Representative digital photographs of the solar equipment</u> (inverter, meter, solar array). Please ensure that the <u>photos and the serial numbers are legible.</u>	<u>Instantaneous Production</u> : A document which verifies that the system is fully functioning as per system design.
<u>EDC Permission to Operate Notification (PTO)</u> - The written notification that the system is authorized to be energized from the utility.	Where applicable, <u>Documentation of Compliance with all Federal, State and local laws</u> , including eligibility for any tax incentives or other government benefits.
For solar systems with an <u>Electric Storage Battery</u> installed, a single line drawing showing the location of the solar equipment and electric storage battery together with a copy of the battery equipment specification sheet.	For solar facilities located on contaminated sites or landfills, a <u>Post-Construction NJDEP Compliance Form</u>
For facilities located on prime soils or soils of statewide importance, an <u>Evidence of the Soil Quality Report</u> by qualified soil scientist/engineer and the proposed sequence for facility removal and site restoration; notification of assigned soil conservation district monitor.	A <u>Vegetation Management Plan</u> consistent with the requirements outlined in N.J.A.C. 14:8-12.8. Solar facilities on built environments, contaminated sites or landfills are not subject to this requirement.



CSI Post Construction (Final As-Built) Certification Checklist

- **CSI Final As-Built Checklist and forms** can be found on the NJ Clean Energy website under [CSI Program](#) or on the homepage of the [CSI portal page](#). A checklist is included in the portal to use to manage your uploads.
- All information entered in the CSI registration portal **must be consistent** with the information on the documents that are uploaded.
- CSI solar facilities must receive permission to operate from the relevant EDC or PJM Interconnection, LLC and submit a Final As-Built (Post-Construction Certification) packet **prior to the expiration date** noted in the Notice of Conditional Registration.
- Documents submitted with electronic signatures must include a **Signature Verification Sheet**

NOTE: CSI solar facilities that do not submit a Final As-Built packet with permission to operate on or before the expiration date **may lose their SREC-II qualification.**

CSI Program Extension Policy

Solar facilities registered in the CSI program may be eligible for one six-month extension at the discretion of the CSI Program Manager, as determined on a case-by-case basis.

- All extension requests must be submitted in the CSI online registration portal on or before the CSI registration's expiration date, noted in the CSI conditional acceptance letter.
- Extension requests that are submitted after the expiration date will not be considered and the CSI registration will be cancelled.
- The CSI Program Manager will take into consideration whether the registrant has submitted timely quarterly milestone reporting forms
- If the extension is granted, the CSI Program registration manager shall provide a new conditional CSI registration expiration date, six months from the expiration of the original conditional acceptance letter.
- Any CSI solar facility that would like to submit a request for a second extension must submit a petition to the Board Secretary, for consideration. Instruction for submitting a petition can be found on the NJ Clean Energy website under the [NJBPU Homepage](#).

CSI Extension Request Requirements

Extension requests must demonstrate the following:

- 1) The delays for not completing the installation of the solar facility by the expiration date were due to extenuating circumstances.
- 2) Evidence that the facility has made progress toward completion, and the likelihood of timely and successful completion of the solar facility.

Additional information may be requested by the CSI Program Manager for purposes of determining a project's eligibility for an extension.

Extension Request Checklist

A **Cover Letter** explaining the reason for the delay in completing the solar installation.

Date-stamped **evidence that project representatives attempted to communicate with local code officials** (e.g., emails with the local code officials requesting an inspection); or, if the project has already passed local code inspections, include copies of permits.

Date-stamped **photographs of the solar equipment**

For Net-Metered Solar Facilities, a copy a **Complete Part I Interconnection Application approval** (Approval to Interconnect) from the EDC and/or evidence that the application to energize (Part II of the interconnection application) was submitted to the EDC.

For Grid Solar Facilities, **copies of all interconnection-related correspondence between the project and PJM Interconnection** and its agents, including any interconnection applications, any draft or executed study agreements, evidence submitted to meet PJM milestones, and any other interconnection materials or correspondence between the project developer and PJM, the relevant agent, or utility.

Milestone Reporting Form - Timely submission of quarterly Milestone Reporting forms will be taken into consideration by the CSI Program for projects seeking an extension.

Q&A



Additional Resources

- CSI Program Checklist and Forms <https://njcleanenergy.com/renewable-energy/programs/susi-program/csi-program>
- CSI Program Registration Online Portal and CSI Portal User Instructions Document <https://njcsi.customerapplication.com/>
- Check out the Solar Proceedings webpage: <https://njcleanenergy.com/renewable-energy/program-updates-and-background-information/solar-proceedings>
- Email us at NJREINFO@NJCleanEnergy.com

More Information

VISIT

<https://njcleanenergy.com/renewable-energy/program-updates-and-background-information/solar-proceedings>

NEWSLETTER

NJCleanEnergy.com/NEWSLETTER

LISTSERVS

NJCleanEnergy.com/LISTSERVS

@NJCleanEnergy



THANK YOU

